



RX-AquaArmour 10

A unique rapid cure, seamless and flexible resin system specifically formulated for the waterproofing industry.

ROBEX

www.robex.co.za



What is RX-AquaArmour 10?

RX-AquaArmour 10, is a high-performance twin-pack resin-based waterproofing membrane formulated to deliver unparalleled protection and performance against water ingress. RX-AquaArmour 10 is extremely versatile and can be applied to almost all sound and stable substrates. One of the most significant advantages is that the system can be applied over existing sheet membranes, reducing excessive tear-off costs.

Features & Benefits

- **Fast Curing** – Areas returned to service quickly, reducing downtime and mitigating issues related to inclement weather.
- **Versatile Application** – Can be spray applied to large areas or manually applied to compact or detailed areas.
- **Adhesion** – The RX-AquaArmour 10 Primer provides a superior bond to both sound solid substrates and existing sheet membrane systems.
- **Non-hazardous and Environmentally friendly** – Low VOC Content.
- **Lightweight** – Minimises structural weight loading.
- **Seamless** – RX-AquaArmour 10 is a fully bonded seamless waterproofing system that prevents moisture from travelling below the resin system, providing ease of maintenance.
- **Flexible** – 350% elongation that caters for movement and thermal cycling.
- **Supported by a 10-year guarantee** - Providing customer peace of mind.
- **Long service life** – Excellent resistance to ageing, UV attack, weathering etc.
- **Rejuvenation** – RX-AquaArmour 10 can be rejuvenated after or during the allocated guarantee period.

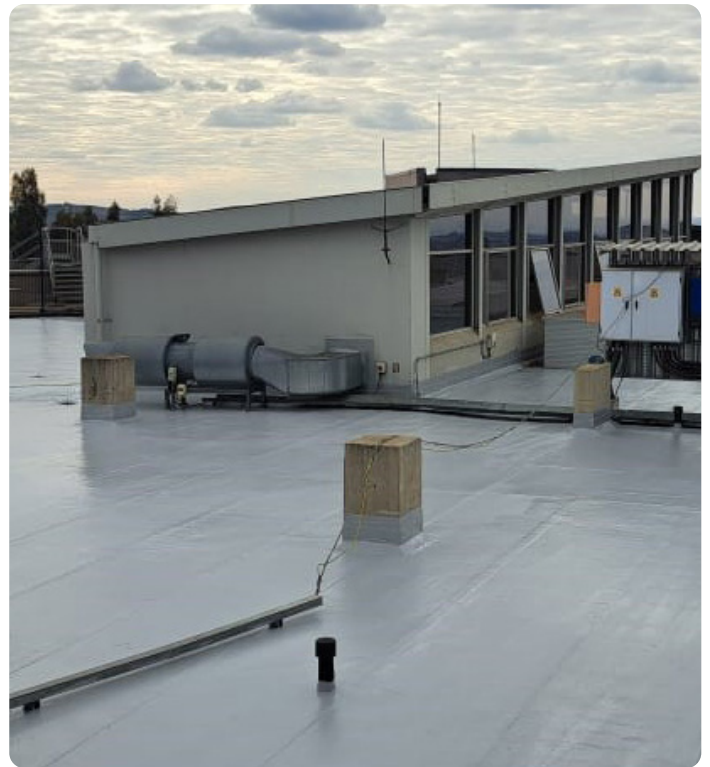
Basic Uses

- Metal profile sheets
- On top of PU insulation
- Existing bitumen membranes
- Roofs, terraces and balconies

Technical Data

Physical properties of RX-AquaArmour 10

Property	Test Method	Typical Value
Mixed Density (g/l)	ASTM D1475	1.1 ± 0.05
Solid Content (%)	ASTM D1353	75% ± 2%
Pot Life (hrs.)	-	6
VOC (g/l)	USEPA 24	<10
Tensile Strength (N/mm ²)	ASTM D412	>2.5
Elongation (%)	ASTM D412	>350
Tear Strength (N)	ASTM D624	>25
Solar Reflectance (%)	ASTM E1549	>75
Shore A Hardness	ASTM D2240	45
Water Vapour Transmission	ASTM E96	6
Crack Bridging Ability (mm)	ASTM C836	<4
Application Temperature (°C)	-	5 to 45
Service Temperature (°C)	-	-5 to 70



Contact us

Get in touch with our team for any enquiries:

✉ info@robex.co.za

☎ 011 896 9600

👉 www.robex.co.za