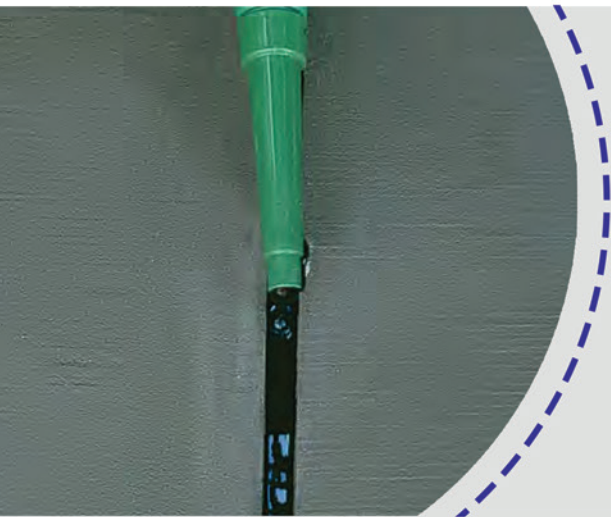


## ANCHORING, JOINT SEALING & ASPHALT REPAIRS

### RX Injectabond

Ideal for use as an anchoring system reaching high levels of strength rapidly. Ideal for anchoring plant and machinery bolts, wall ties and starter bars. Injectabond uses its own specially designed applicator and self mixing nozzles to guarantee correct mixing every time.

- Rapid curing
- Tremendous strength
- Easy to use



### RX Expansion Joint Sealant

The simple solution to problem expansion joints. Made especially for sealing cracks and joints, it has tremendous bond strength combined with superb flexibility.

Easy to apply - simply pour into the joint.

- Tremendous flexibility
- Superb bond strength

### RX ISR

A combination of selected high quality aggregates and a unique plastic compound which bond together to provide a fast, permanent repair.

ISR can be used as an instant repair to asphalt, tarmac, concrete and other surfaces without the need for cutting out or a tack coat.

- Can be applied immediately
- No mixing or heating required
- Easy to use
- Can be used in wet weather

